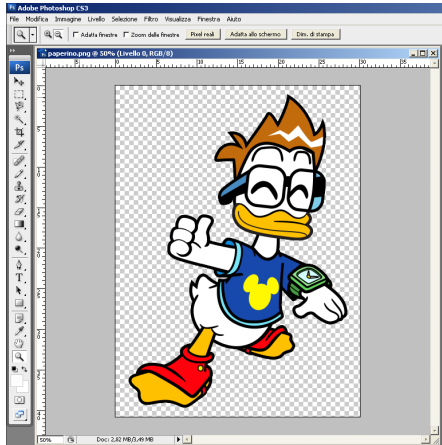
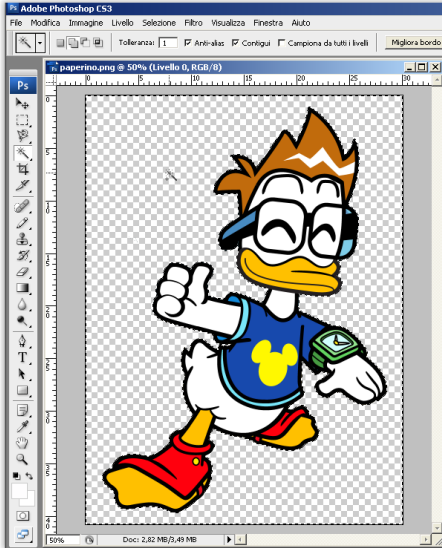
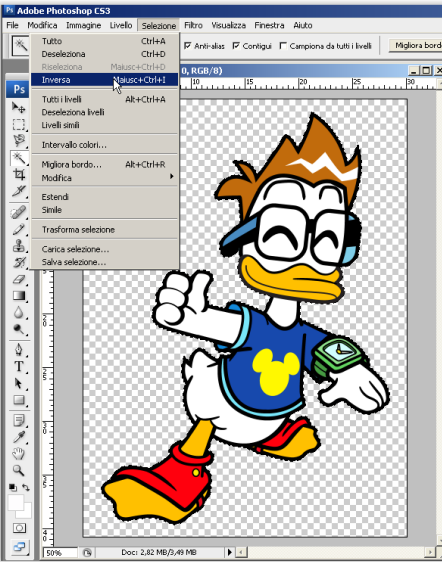


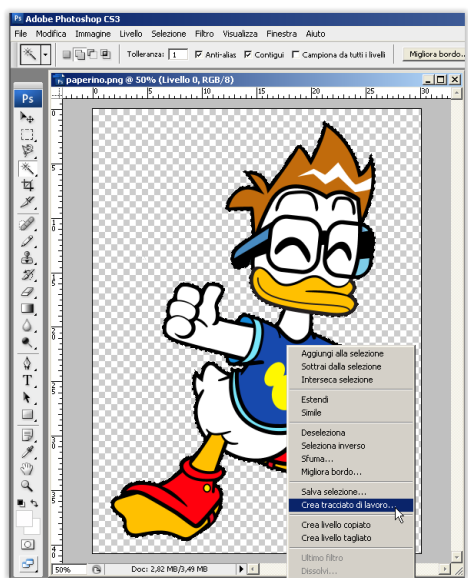
# INSTRUCTIONS FOR PRINTING AN IMAGE WITHOUT WHITE FROM PHOTOSHOP

## INTRODUCTION

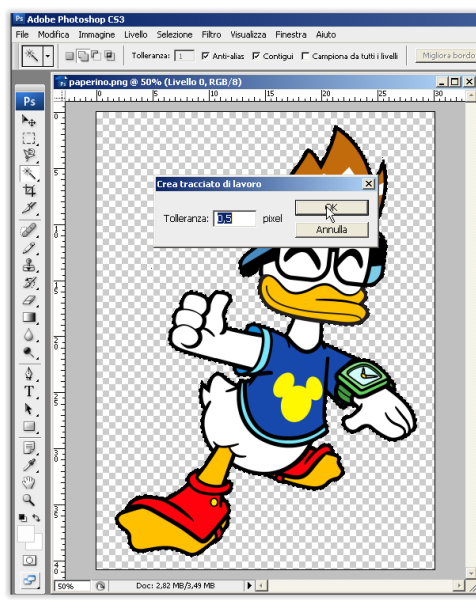
An image of any type (jpg, png, tiff, etc.) will be printed from Photoshop always with the "square" blank if you do not set the clipping path as follows.

<p>1 Open the image. Note: Images may have white parts adjacent to those to be deleted, we recommend using PNG images if possible.</p>	
<p>2 With the Magic Wand tool, assign a low tolerance (1-3) and select the transparent area (or white)</p>	
<p>3 Select from the menu "selection" "inverse" to select the active area desired.</p>	

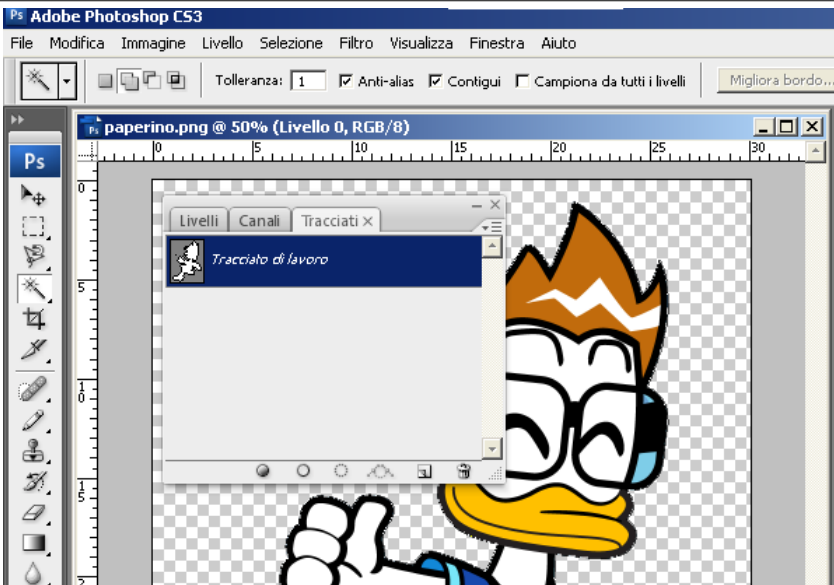
4 Click the right mouse button and select "Create Work Path"



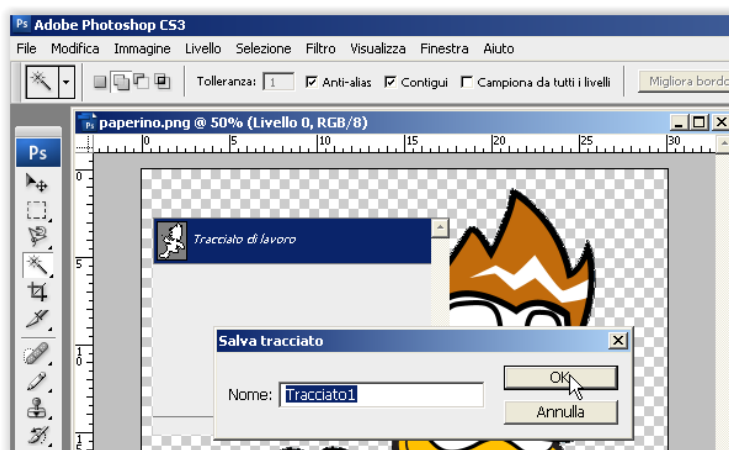
5 Assign a low tolerance (0.5 - 1 pixel) to obtain a path without white.



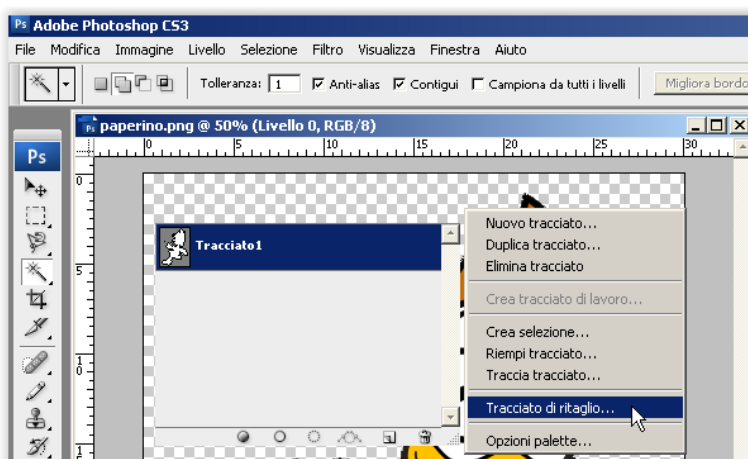
6 Open the "levels - channels," and from the "paths" double-click the work path.



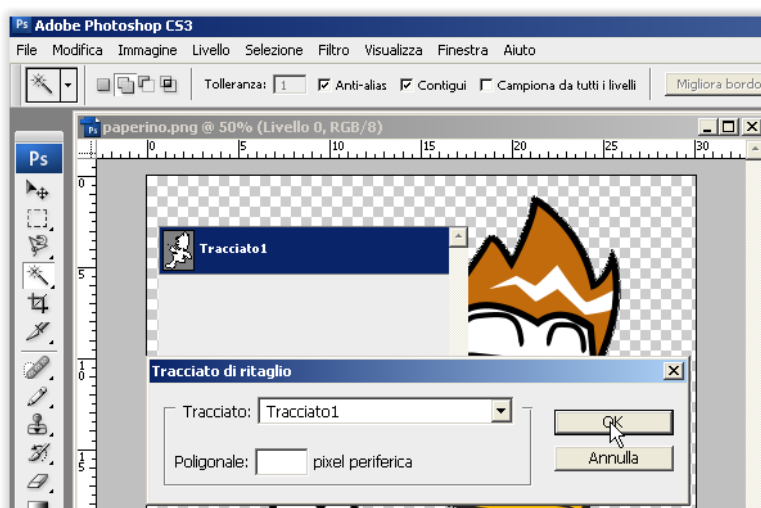
7 Save the work path with the name "path 1"



8 On the window paths, click on the arrow and run the menu "clipping path"

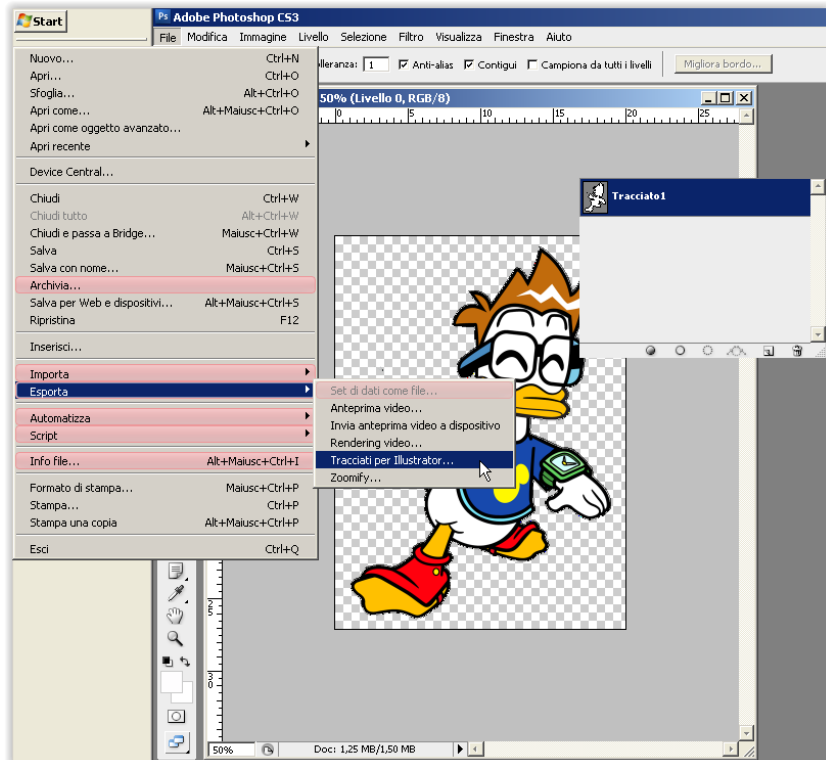


9 Click OK to select the Track 1 as a clipping path.



10 Select the printer WT and print.

11 In case you would like print from Illustrator, you will need to export the path: from the File menu, run the command "export paths to Illustrator."



12 Save the path with the desired name and then reopen it by Illustrator. Now follow the instructions in the help "instructions Illustrator cut white."

